

Fitment Instructions L.R. 130 / Double Cab

Packing list:

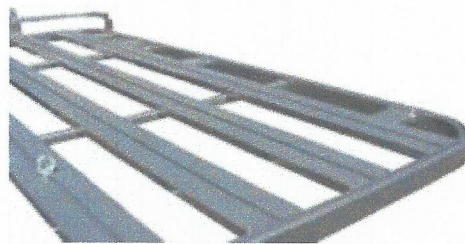
- 1*rack bed
- 2*side rails
- 1*rear rail - the curved one
- 3 of 50 * 25mm cross members
- 2*leg sets/gutter support rails
- 1* part box

Contents of Parts Box

- 6*stainless u channel brackets - with Hannibal elephant
-fitted with 24 sets 6mm*12mm nuts, washers and dome nuts and 2 sets 6*15mm for the front attachment point of the top rail.
- 6 of 8mm nyloc nuts
- 6 of 8mm flat washers
- 6 of 8*40mm bolts
- 12 of 8m spring washers
- 6 of 8mm nuts

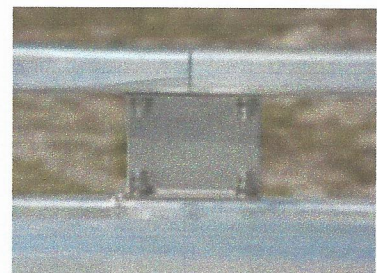
- 3 * 1.2m sections adhesive foam rubber
- 2 * sections 2.0m gutter rubber u – channel

- 6 * gutter clamps
- 6 * self adhesive clamp foam



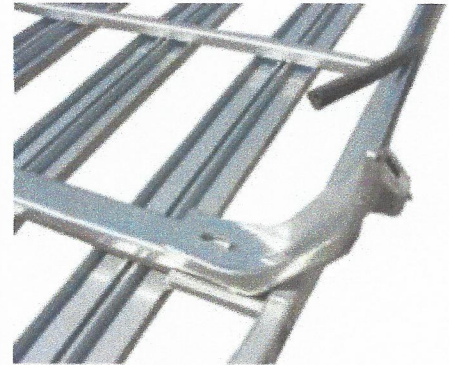
Top Rail assembly:

1. Slide firstly 1 of the 6.15mm, then 4 of 6*12mm bolts into each channel on the top of the tubing on the sides on the rack. The very first one, slide all the way forward - this will be used to fasten the front of the top rail to the rack at a later stage.
2. Slide 4 of 6*12's into the underside of each top rail, as well as the back curved one.
3. Attach 2 stainless u channels to both sides of the rack - the back one should be positioned so that it overlaps with half of the rear rail, and half on the side rail - position the join in the middle. Position the front one midway between the rear and the front of the side rail. Mount the side rail on top of these plates, bolting the front down with the one bolt you left right in the front of the rack. Tighten all in place(keep loose for minor adjustment), repeat for back rail and other side rail.
4. Tighten all nuts.

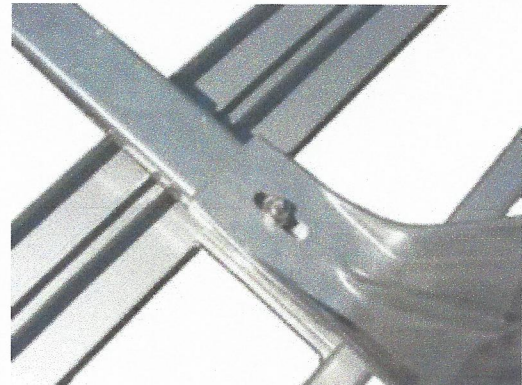


Fitment:

1. Remove rack from carton
2. Turn bed upside down.
3. Attach u – channel rubber to leg sections/gutter support rails.
4. Locate three 50*25mm tubings on the slotted solid bar of the leg sections. Attach self adhesive foam on the 50*25 tubings between the leg sections.



5. Turn tubings and leg section upside down and fit into corresponding channels on underside of bed. Align legs and bolt loosely together using the six 8mm bolts, nuts and washers (washers top and bottom).
6. Turn rack over.
7. Fit top rail as per top rail fitment instruction.
8. Using four persons, lift rack onto vehicle. Adjust width of gutter rail by pulling outward or pushing inward as required.
9. Align rack with rear of vehicle.
10. Attach clamp foam to clamps and position clamps in clamp blocks. Attach 8mm flat washers and nuts and hand tighten. Hand-tighten clamp block grub screws.
11. Tighten 8mm clamp nuts taking care not to over-tighten and distort clamp or plastic channel lining (Disco 2). Maintain pressure, (by hand) to keep clamp flush against gutter rail whilst tightening. Tighten grub screw.
12. Tighten 8mm bolts.
13. Finally check all nuts and bolts for fastness.



Important:

Check all nuts and bolts periodically to ensure none have loosened.